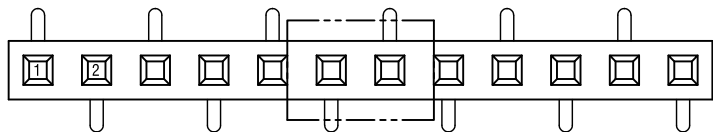


4

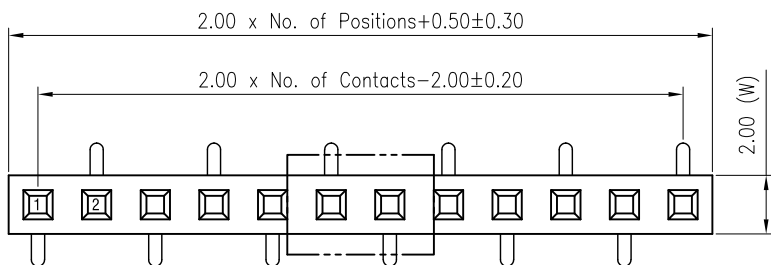
3

2

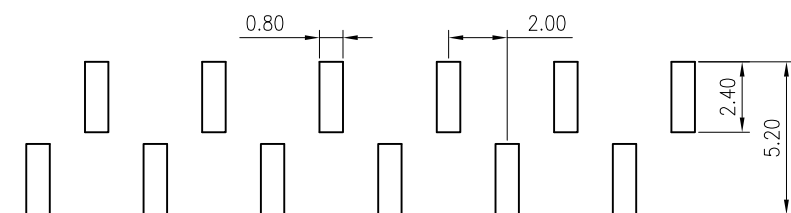
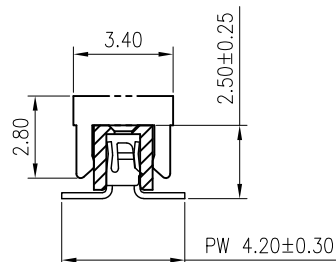
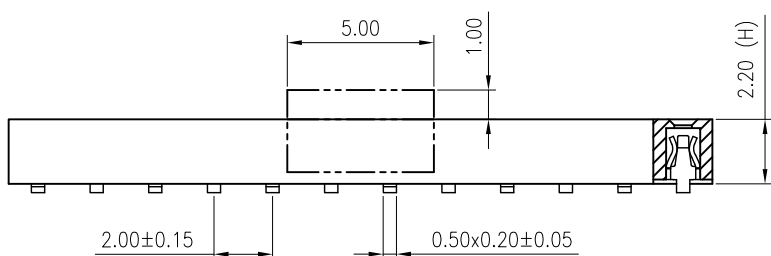
1



SMT B Type



SMT A Type



P.C.B LAYOUT (A Type)

| PROJECT | PW (mm) |
|-----------|---------|
| Standard | 4.5 |
| Specified | 4.0/4.2 |

2

1

REVISION DATA

| REV | DESCRIPTION | DATE |
|-----|-------------|------------|
| A0 | NEW DRAWING | 2016-06-24 |

Specification

Material:

Contact Material: Brass/Phosphor Bronze

Contact plating: Au or Sn Over30-50u" Ni

Insulator Material: Black Polyester UL94V-0

Standard: PA6T/PA9T/LCP+30%G.F

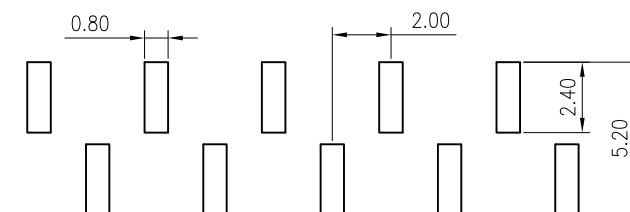
Electrical:

Current rating: 2.0Amps/contact max.

Contact resistance: $\leq 20m\Omega$ /contactInsulation resistance: $\geq 1000M\Omega$ at V=100V

Withstanding Voltage: 500V AC/minute

Mechanical:

Operating temperature: $-40^{\circ}C$ to $+105^{\circ}C$ Reflow soldering temperature: $260\pm 5^{\circ}C$, 10s

P.C.B LAYOUT (B Type)

| FD02 | 1XX1 | X | XX | X | X | B | N | X | X00 |
|--|----------------------------|--|--|---|---|----------------------------|------------------------------------|---|--|
| Product Descriptions FD02 H2.2 W2.0 | No. of Positions 02-40P | Angle Type A SMT A Type B SMT B Type | Contact Plated SN Tin120u" MT 雾锡120u" GF Gold 0.8u" G1 Au1u" G3 Au3u" G4 Au5u" G6 Au10u" G7 Au15u" G8 Au30u" GA Au1.5u" S1 半金锡1u" | Contact Material B Brass P Phosphor Bronze | Insulator Material C PA6T E PA9T F LCP | Insulator Color B Black | Insulator Feature N Without Peg | Packing Options A PE Bag B Tray C PVC Box D Tube E Tube+CAP F Tape Reel G Reel+CAP H Tube+Mylar I Reel+Mylar | Series No. A00 PW4.2mm B00 PW4.2mm |

GSAMTEK® 东莞市广溯电子科技有限公司
DONGGUAN GUANG SU ELECTRONIC TECHNOLOGY CO.,LTD

| TOLERANCE | PROJECTON | TITLE: |
|-----------------------|------------------|---|
| ANGLE $\pm 5^{\circ}$ | DATE: 2016-06-24 | 双排SMT A/B Type排母 PH2.0 H2.2 W2.0 U型 PW4.2 |
| X.XXX ± 0.10 | DRAWN: SAMTEK | PART NO. FD021XX1XXXXBNXX00 |
| X.XX ± 0.20 | CHECKED: | DRAWING NO. |
| X.X ± 0.30 | APPROVED: | REV: A0 UNIT: mm SCALE: 3:1 SIZE: A4 |
| X. ± 0.50 | | |

4

3

2

1