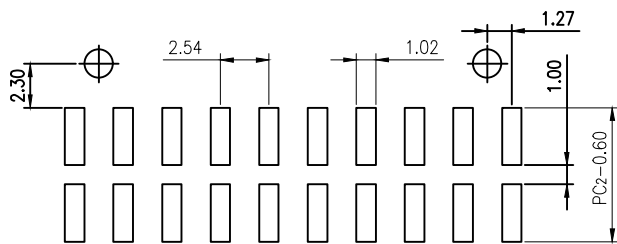
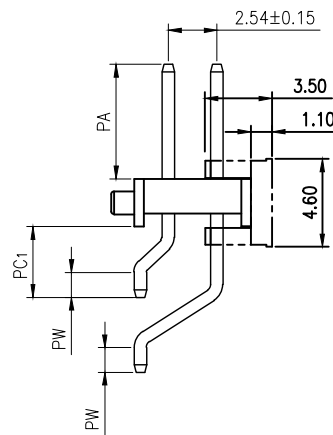
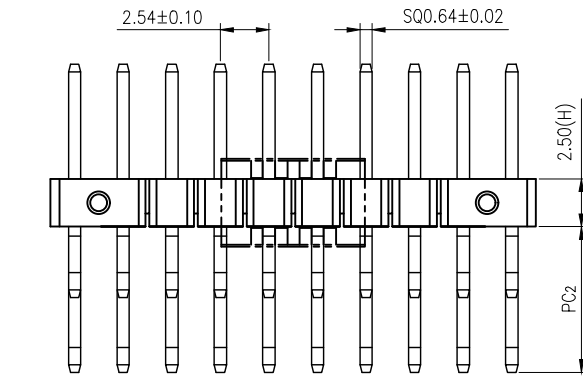
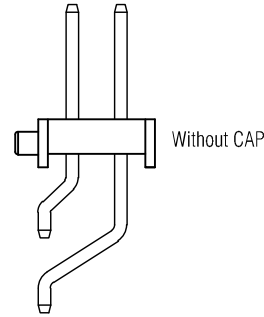
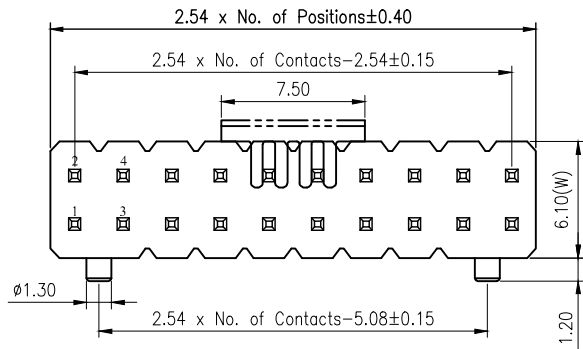


REVISION DATA		
REV	DESCRIPTION	DATE
A0	NEW DRAWING	2019-08-20



P.C.B LAYOUT

## Specification

Material:

Contact Material: Brass

Contact plating: Au or Sn Over 30-50u" Ni

Insulator Material: Black Polyester UL94V-0

Standard: PA6T/PA9T/LCP + 30%G.F

Electrical:

Current rating: 3.0Amps/contact max.

Contact resistance:  $\leq 20\text{m}\Omega/\text{contact}$

Insulation resistance:  $\geq 1000\text{M}\Omega$  at  $V=100\text{V}$

Withstanding Voltage: 1000V AC/minute

Mechanical:

Operating temperature:  $-40^\circ\text{C}$  to  $+105^\circ\text{C}$

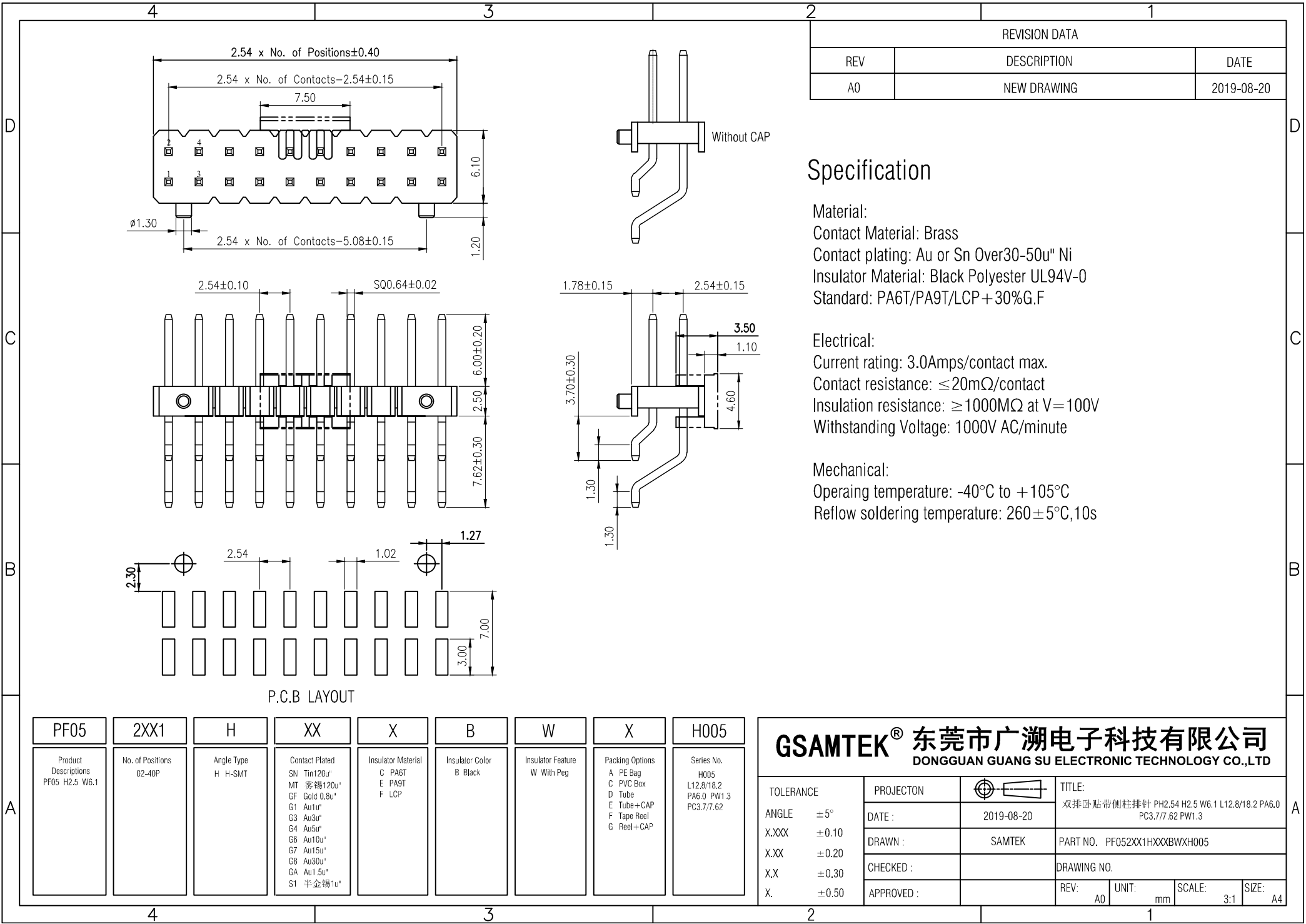
Reflow soldering temperature:  $260 \pm 5^\circ\text{C}, 10\text{s}$

PROJECT	PA (mm)	PW (mm)	PC1 (mm)	PC2 (mm)
Standard	6.00	1.30	3.70	7.62
Specified				

PF05	2XX1	H	XX	X	B	W	X	HXXX
Product Descriptions PF05 H2.5 W6.1	No. of Positions 02-40P	Angle Type H H-SMT	Contact Plated SN Tin120u" MT 雾锡120u" GF Gold 0.8u" G1 Au1u" G3 Au3u" G4 Au5u" G6 Au10u" G7 Au15u" G8 Au30u" GA Au1.5u" S1 半金锡1u"	Insulator Material C PA6T E PA9T F LCP	Insulator Color B Black	Insulator Feature W With Peg	Packing Options A PE Bag C PVC Box D Tube E Tube+CAP F Tape Reel G Reel+CAP	Series No. HXXX $L_{\text{tot}} = PA + H + PC1 + 0.6$ $L_{\text{tot}} = L_{\text{tot}} + 5.40$

**GSAMTEK® 东莞市广溯电子科技有限公司**  
DONGGUAN GUANG SU ELECTRONIC TECHNOLOGY CO.,LTD

TOLERANCE	PROJECTON		TITLE:
ANGLE $\pm 5^\circ$	DATE :	2019-08-20	双排卧贴带侧柱排针 PH2.54 H2.5 系列图
X.XXX $\pm 0.10$	DRAWN :	SAMTEK	PART NO. PF052XX1HXXXBWXHXXX
X.XX $\pm 0.20$	CHECKED :		DRAWING NO.
X.X $\pm 0.30$	APPROVED :		REV: A0 UNIT: mm SCALE: 3:1 SIZE: A4
X. $\pm 0.50$			



REVISION DATA		
REV	DESCRIPTION	DATE
A0	NEW DRAWING	2019-08-20

### Specification

Material:  
 Contact Material: Brass  
 Contact plating: Au or Sn Over30-50u" Ni  
 Insulator Material: Black Polyester UL94V-0  
 Standard: PA6T/PA9T/LCP+30%G.F

Electrical:  
 Current rating: 3.0Amps/contact max.  
 Contact resistance:  $\leq 20\text{m}\Omega/\text{contact}$   
 Insulation resistance:  $\geq 1000\text{M}\Omega$  at  $V=100\text{V}$   
 Withstanding Voltage: 1000V AC/minute

Mechanical:  
 Operating temperature:  $-40^\circ\text{C}$  to  $+105^\circ\text{C}$   
 Reflow soldering temperature:  $260 \pm 5^\circ\text{C}, 10\text{s}$

PF05	2XX1	H	XX	X	B	W	X	H005
Product Descriptions PF05 H2.5 W6.1	No. of Positions 02-40P	Angle Type H H-SMT	Contact Plated SN Tin120u" MT 雾锡120u" GF Gold 0.8u" G1 Au1u" G3 Au3u" G4 Au5u" G6 Au10u" G7 Au15u" G8 Au30u" GA Au1.5u" S1 半金锡1u"	Insulator Material C PA6T E PA9T F LCP	Insulator Color B Black	Insulator Feature W With Peg	Packing Options A PE Bag C PVC Box D Tube E Tube+CAP F Tape Reel G Reel+CAP	Series No. H005 L12.8/18.2 PA6.0 PW1.3 PC3.7/7.62

**GSAMTEK® 东莞市广溯电子科技有限公司**  
 DONGGUAN GUANG SU ELECTRONIC TECHNOLOGY CO.,LTD

TOLERANCE	PROJECTON		TITLE:
ANGLE $\pm 5^\circ$	DATE:	2019-08-20	双排贴片带侧柱排针 PH2.54 H2.5 W6.1 L12.8/18.2 PA6.0 PC3.7/7.62 PW1.3
X.XXX $\pm 0.10$	DRAWN:	SAMTEK	PART NO. PF052XX1HXXXBWXH005
X.XX $\pm 0.20$	CHECKED:		DRAWING NO.
X.X $\pm 0.30$	APPROVED:		REV: A0 UNIT: mm SCALE: 3:1 SIZE: A4
X. $\pm 0.50$			