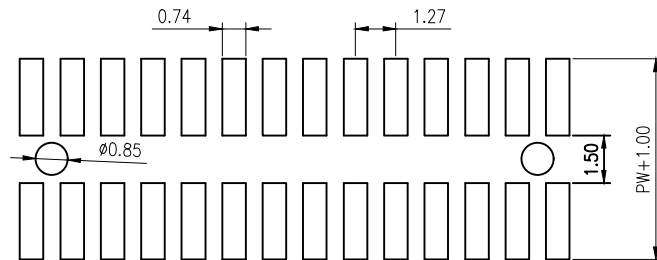
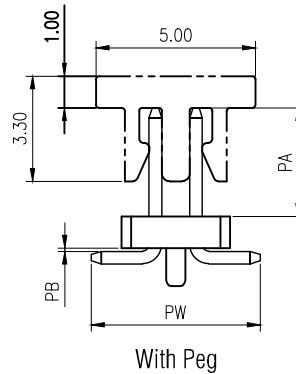
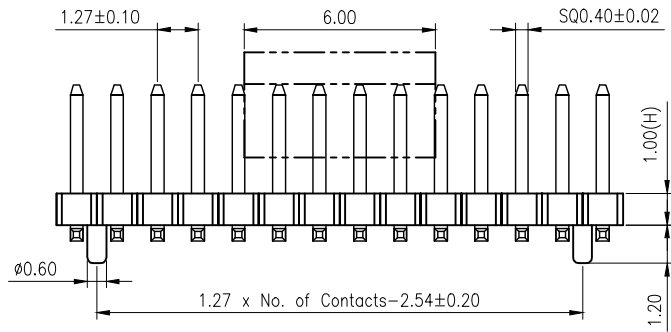
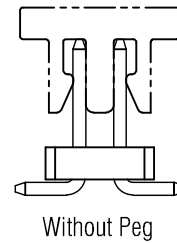
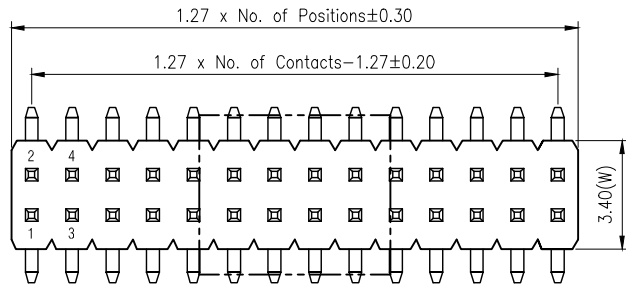


REVISION DATA		
REV	DESCRIPTION	DATE
A0	NEW DRAWING	2017-07-29



P.C.B LAYOUT

Specification

Material:

Contact Material: Brass

Contact plating: Au or Sn Over 30-50u" Ni

Insulator Material: Black Polyester UL94V-0

Standard: PA6T/PA9T/LCP + 30%G.F

Electrical:

Current rating: 1.0Amps/contact max.

Contact resistance: $\leq 20m\Omega$ /contact

Insulation resistance: $\geq 500M\Omega$ at V=100V

Withstanding Voltage: 300V AC/minute

Mechanical:

Operating temperature: -40°C to +105°C

Reflow soldering temperature: 260 ± 5°C, 10s

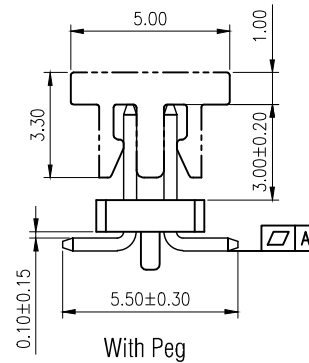
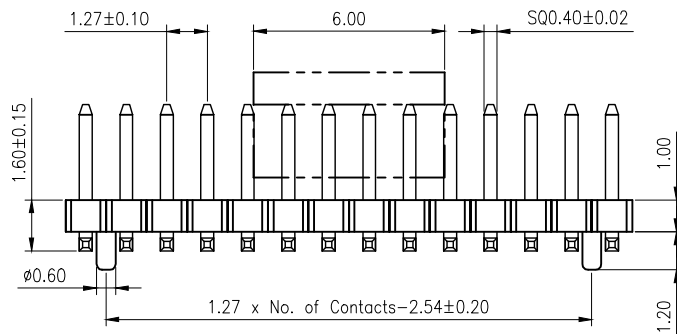
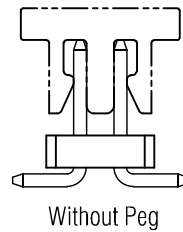
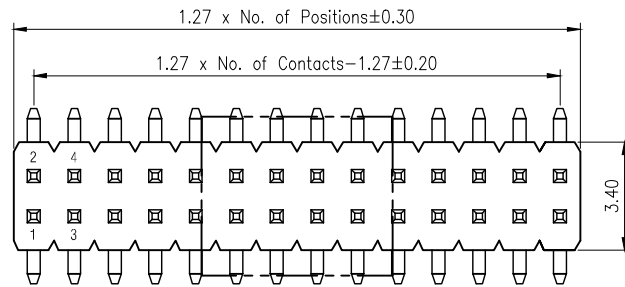
PROJECT	PA (mm)	PB (mm)	PW (mm)
Standard	3.00	0.1	5.50
Specified			

PC01	2XX1	S	XX	X	B	X	X	SXXX
Product Descriptions PC01 H1.0 W3.4	No. of Positions 03-50P	Angle Type S SMT Type	Contact Plated SN Tin120u" MT 雾锡120u" GF Gold 0.8u" G1 Au1u" G3 Au3u" G4 Au5u" G6 Au10u" G7 Au15u" G8 Au30u" GA Au1.5u" S1 半金锡1u"	Insulator Material C PA6T E PA9T F LCP	Insulator Color B Black	Insulator Feature N Without Peg W With Peg	Packing Options C PVC Box D Tube E Tube+CAP F Tape Reel G Reel+CAP	Series No. SXXX L=PA+PB+H+ (PW-1.27)/2

GSAMTEK® 东莞市广溯电子科技有限公司
DONGGUAN GUANG SU ELECTRONIC TECHNOLOGY CO.,LTD

TOLERANCE	PROJECTON		TITLE:
ANGLE $\pm 5^\circ$	DATE :	2017-07-29	双排SMT排针 PH1.27 H1.0 W3.4 系列图
X.XXX ± 0.10	DRAWN :	SAMTEK	PART NO. PC012XX1SXXXBXXSXXX
X.XX ± 0.20	CHECKED :		DRAWING NO.
X.X ± 0.30	APPROVED :		REV: A0 UNIT: mm SCALE: 3:1 SIZE: A4
X. ± 0.50			

REVISION DATA		
REV	DESCRIPTION	DATE
A0	NEW DRAWING	2017-05-22



Specification

Material:

Contact Material: Brass

Contact plating: Au or Sn Over 30-50u" Ni

Insulator Material: Black Polyester UL94V-0

Standard: PA6T/PA9T/LCP + 30%G.F

Electrical:

Current rating: 1.0Amps/contact max.

Contact resistance: ≤ 20mΩ/contact

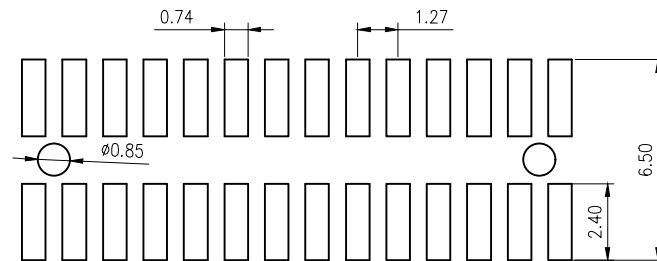
Insulation resistance: ≥ 500MΩ at V=100V

Withstanding Voltage: 300V AC/minute

Mechanical:

Operating temperature: -40°C to +105°C

Reflow soldering temperature: 260 ± 5°C, 10s



P.C.B LAYOUT

No. of Positions	A (mm)
2*02~2*15P	0.10
2*16~2*30P	0.15
2*31~2*40P	0.20
2*41~2*50P	0.25

PC01	2XX1	S	XX	X	B	X	X	S003
Product Descriptions PC01 H1.0 W3.4	No. of Positions 03-50P	Angle Type S SMT Type	Contact Plated SN Tin120u" MT 雾锡120u" GF Gold 0.8u" G1 Au1u" G3 Au3u" G4 Au5u" G6 Au10u" G7 Au15u" G8 Au30u" GA Au1.5u" S1 半金锡1u"	Insulator Material C PA6T E PA9T F LCP	Insulator Color B Black	Insulator Feature N Without Peg W With Peg	Packing Options C PVC Box D Tube E Tube+CAP F Tape Reel G Reel+CAP	Series No. S003 L6.3mm PA3.0 PB0.2 PW5.5

GSAMTEK® 东莞市广溯电子科技有限公司
DONGGUAN GUANG SU ELECTRONIC TECHNOLOGY CO.,LTD

TOLERANCE	PROJECTON	TITLE:
ANGLE ±5°	DATE: 2017-05-22	双排SMT排针 PH1.27 H1.0 W3.4 L6.3 PA3.0 PB0.1 PW5.5
X.XXX ±0.10	DRAWN: SAMTEK	PART NO. PC012XX1SXXXBXXS003
X.XX ±0.20	CHECKED:	DRAWING NO.
X.X ±0.30	APPROVED:	REV: A0 UNIT: mm SCALE: 3:1 SIZE: A4
X. ±0.50		