

REVISION DATA		
REV	DESCRIPTION	DATE
A0	NEW DRAWING	2017-05-02

Specification

Material:

Contact Material: Brass

Contact plating: Au or Sn Over30-50u" Ni

Insulator Material: Black Polyester UL94V-0

Standard: PA6T/PA9T/LCP+30%G.F

Electrical:

Current rating: 1.0Amps/contact max.

Contact resistance: $\leq 20\text{m}\Omega/\text{contact}$

Insulation resistance: $\geq 500\text{M}\Omega$ at $V=100\text{V}$

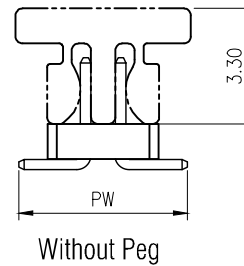
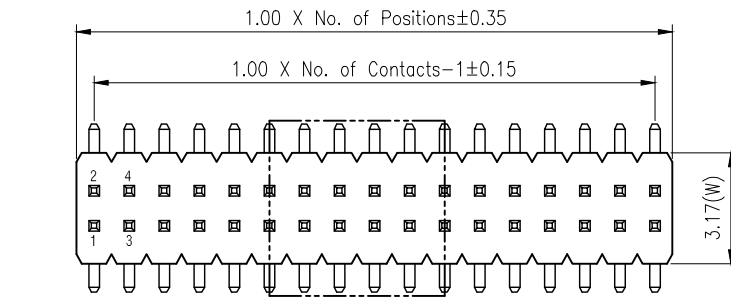
Withstanding Voltage: 300V AC/minute

Mechanical:

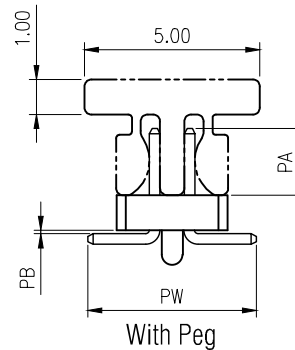
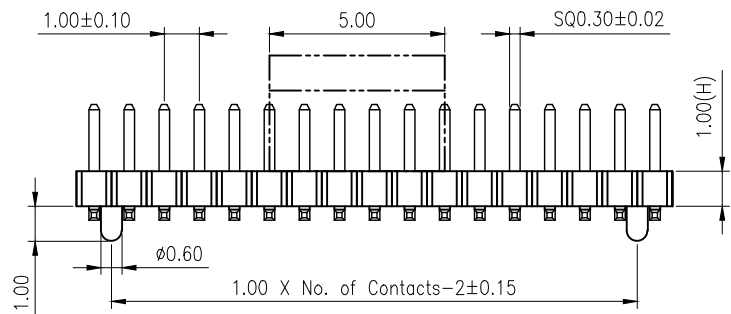
Operating temperature: -40°C to $+105^{\circ}\text{C}$

Reflow soldering temperature: $260\pm 5^{\circ}\text{C}$, 10s

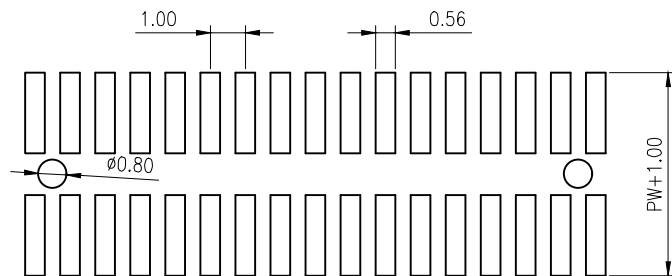
PROJECT	PA (mm)	PB (mm)	PW (mm)
Standard	2.00	0.10	4.80
Specified			



Without Peg



With Peg



P.C.B LAYOUT

PB01	2XX1	S	XX	X	B	X	X	SXXX
Product Descriptions PB01 H1.0 W3.17	No. of Positions 03-50P	Angle Type S SMT Type	Contact Plated SN Tin120u" MT 雾锡120u" GF Gold 0.8u" G1 Au1u" G3 Au3u" G4 Au5u" G6 Au10u" G7 Au15u" G8 Au30u" GA Au1.5u" S1 半金锡1u"	Insulator Material C PA6T E PA9T F LCP	Insulator Color B Black	Insulator Feature N Without Peg W With Peg	Packing Options C PVC Box D Tube E Tube+CAP F Tape Reel G Reel+CAP	Series No. SXXX L=PA+PB+H+ (PW-1.0)/2

GSAMTEK® 东莞市广溯电子科技有限公司
DONGGUAN GUANG SU ELECTRONIC TECHNOLOGY CO.,LTD

TOLERANCE	PROJECTON		TITLE:
ANGLE $\pm 5^{\circ}$	DATE :	2017-05-02	双排SMT排针 PH1.0 H1.0 W3.17 系列图
X.XXX ± 0.10	DRAWN :	SAMTEK	PART NO. PB012XX1SXXXBXXSXXX
X.XX ± 0.20	CHECKED :		DRAWING NO.
X.X ± 0.30	APPROVED :		REV: A0 UNIT: mm SCALE: 3:1 SIZE: A4
X. ± 0.50			

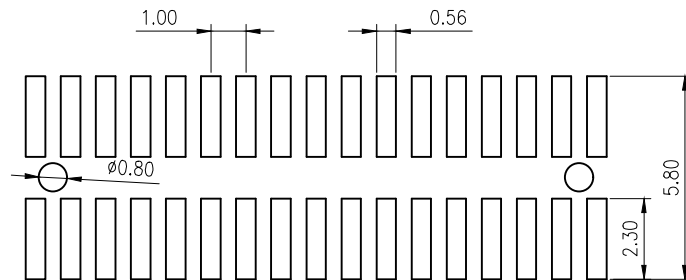
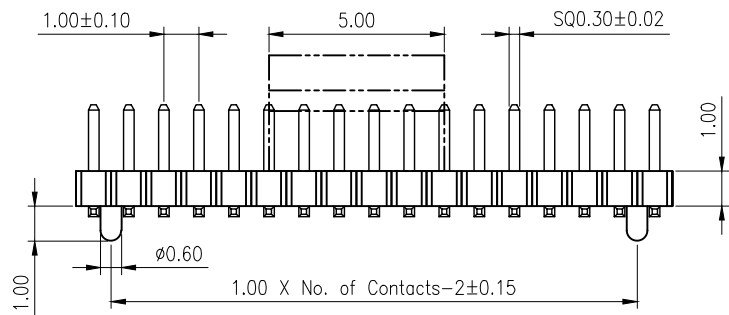
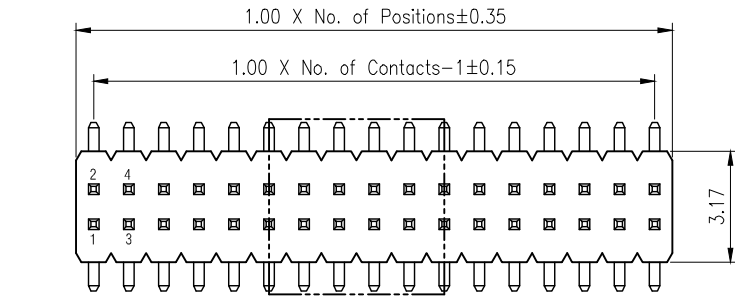
REVISION DATA		
REV	DESCRIPTION	DATE
A0	NEW DRAWING	2017-05-02

Specification

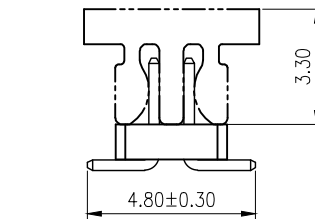
Material:
 Contact Material: Brass
 Contact plating: Au or Sn Over30-50u" Ni
 Insulator Material: Black Polyester UL94V-0
 Standard: PA6T/PA9T/LCP+30%G.F

Electrical:
 Current rating: 1.0Amps/contact max.
 Contact resistance: $\leq 20\text{m}\Omega/\text{contact}$
 Insulation resistance: $\geq 500\text{M}\Omega$ at $V=100\text{V}$
 Withstanding Voltage: 300V AC/minute

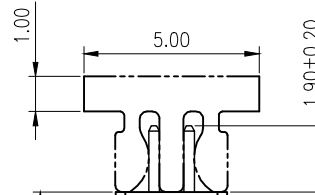
Mechanical:
 Operating temperature: -40°C to $+105^{\circ}\text{C}$
 Reflow soldering temperature: $260 \pm 5^{\circ}\text{C}, 10\text{s}$



P.C.B LAYOUT



Without Peg



With Peg

PB01	2XX1	S	XX	X	B	X	X	S001
Product Descriptions PB01 H1.0 W3.17	No. of Positions 03-50P	Angle Type S SMT Type	Contact Plated SN Tin120u" MT 雾锡120u" GF Gold 0.8u" G1 Au1u" G3 Au3u" G4 Au5u" G6 Au10u" G7 Au15u" G8 Au30u" GA Au1.5u" S1 半金锡1u"	Insulator Material C PA6T E PA9T F LCP	Insulator Color B Black	Insulator Feature N Without Peg W With Peg	Packing Options C PVC Box D Tube E Tube+CAP F Tape Reel G Reel+CAP	Series No. S001 L4.80mm PA1.9 PB0 PW4.8

GSAMTEK® 东莞市广溯电子科技有限公司
 DONGGUAN GUANG SU ELECTRONIC TECHNOLOGY CO.,LTD

TOLERANCE	PROJECTON		TITLE:
ANGLE $\pm 5^{\circ}$	DATE:	2017-05-02	双排SMT排针: PH1.0 H1.0 W3.17 L4.8 PA1.9 PB0 PW4.8
X.XXX ± 0.10	DRAWN:	SAMTEK	PART NO. PB012XX1SXXXBXXS001
X.XX ± 0.20	CHECKED:		DRAWING NO.
X.X ± 0.30	APPROVED:		REV: A0 UNIT: mm SCALE: 3:1 SIZE: A4
X. ± 0.50			