

4

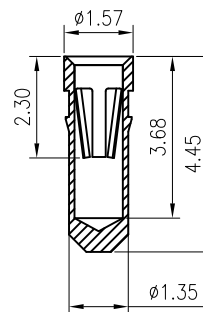
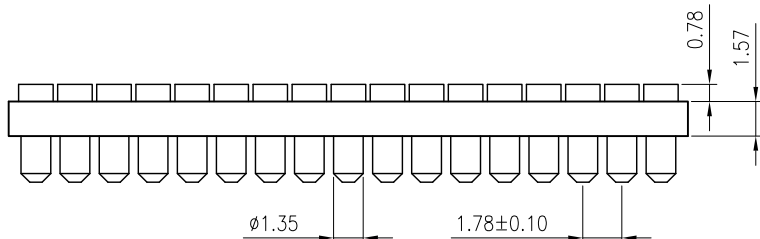
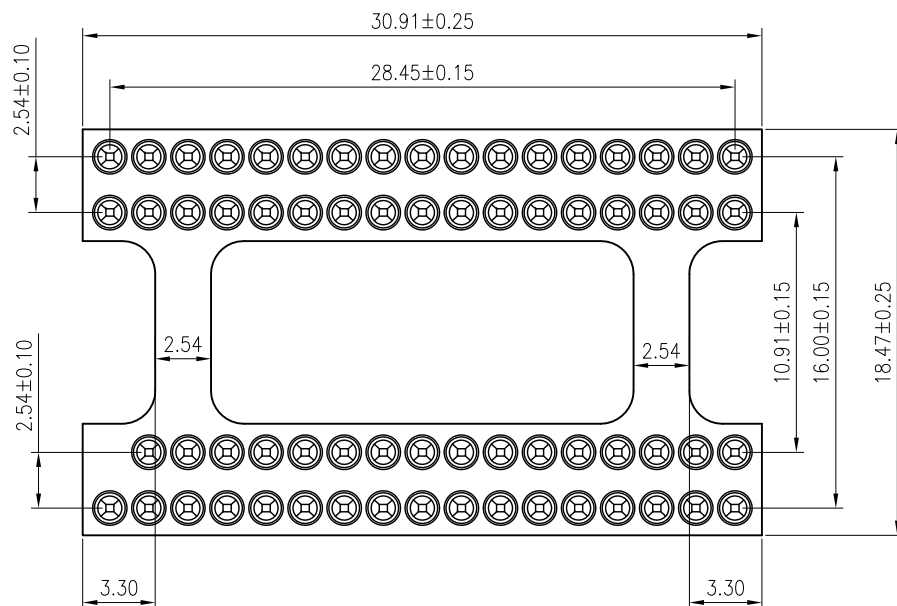
3

2

1

REVISION DATA

REV	DESCRIPTION	DATE
A0	NEW DRAWING	2018-08-22



Technical Data

Material:

Pin(outer sleeve): Brass,machined CuZn38Pb2

Clip(contact 4 finger): Beryllium copper,heat treated

Plating(outer sleeve):

Tin plated:2 μ m/80 μ "Ni, 5 μ m/200 μ "SnPlating(contact): 2 μ m/80 μ "nickel, Gold10 μ "

Insulator black(housing): FR-4 or PPS (UL94V-0)

Electrical:

Current rating: 2Amps/contact max.

Contact resistance: $\leq 4\text{m}\Omega$ /contactInsulation resistance: $\geq 1000\text{M}\Omega$ at V=100V

Operating voltage: 60VAC/DC

Mechanical:

Average insertion force with steel pin of

 $\phi 0.43\text{mm}/0.017"$: <150g

Average withdrawal force with steel pin of

 $\phi 0.43\text{mm}/0.017"$: >50g min.

Mechanical life cycle:min.200

Operating temperatures: Gold Plated:-55°C to+105°C

Tin plated:-40°C to+105°C

Reflow soldering temperature: 260±5°C,10s

PGA

067

6

1

2

5

0445A

1

A

Pkth(mm)	Insulator type	Pin plated	Clip Plated	Pin length(mm)	Insulator Color
1 1.0	1 FR-4	2 Tin200 μ "	5 Gold10 μ "	0445A 4.45	1 Black
2 1.27	2 PPS				
3 1.27*2.54					
4 1.78					
5 2.54					
6 1.78x2.54					

GSAMTEK® 东莞市广溯电子科技有限公司
DONGGUAN GUANG SU ELECTRONIC TECHNOLOGY CO.,LTD

TOLERANCE	PROJECTON	TITLE:
ANGLE $\pm 5^\circ$	DATE : 2018-08-22	1.78x2.54mmPitch PGA Socket 067 Pins Pin Length 4.45mm
X.XXX ± 0.10	DRAWN : samtek	PART NO: PGA06761250445A1A
X.XX ± 0.20	CHECKED :	DRAWING NO:
X.X ± 0.30	APPROVED :	REV: A0 UNIT: mm SCALE: 1:1 SIZE: A4
X. ± 0.50		